

KEY NOTES:

- 1 NEW SIDEWALK. REFER TO DETAIL 1/C1.2
- 2 STRIPING TO BE 4" HI-VIS WHITE
- 3 INSTALL 3 FOOT CURB CUT. REFER TO GRADING PLAN
- 4 MATCH NEW PAVEMENT FLUSH WITH EXISTING PAVEMENT.
- 5 NOT USED.
- 6 DRIVEWAY DETAIL PER MODOT STANDARD. REFER TO SHEET 5/C1.4
- 7 INSTALL DIRECTIONAL ARROW PER DETAIL. REFER TO SHEET 3/C1.4
- 8 ADA PARKING AREA. REFER TO DETAIL 1/C1.4
- 9 BASE BID: INSTALL GRAVEL. PER DETAIL 6/C1.2 CONTRACTOR TO PROVIDE BID ALTERNATE FOR CONCRETE PAVING.
- 10 NEW HEAVY DUTY CONCRETE PAVEMENT. REFER TO DETAIL 3/C1.2
- 11 INSTALL ADA POLE MOUNTED SIGNAGE. REFER TO DETAIL 1/C1.4

SAFETY NOTES:

1. IN ACCORDANCE WITH GENERALLY ACCEPTED CONSTRUCTION PRACTICES, THE CONTRACTOR WILL BE SOLELY AND COMPLETELY RESPONSIBLE FOR CONDITIONS OF THE JOB SITE, INCLUDING SAFETY OF ALL PERSONS AND PROPERTY DURING PERFORMANCE OF THE WORK. THIS REQUIREMENT WILL APPLY CONTINUOUSLY AND NOT BE LIMITED TO NORMAL WORKING HOURS.
2. THE DUTY OF THE ENGINEER OR OWNER TO CONDUCT CONSTRUCTION REVIEW OF THE CONTRACTOR'S PERFORMANCE IS NOT INTENDED TO INCLUDE REVIEW OF THE ADEQUACY OF THE CONTRACTOR'S SAFETY MEASURES IN, ON, OR NEAR THE CONSTRUCTION SITE.

TEMPORARY FIRE ACCESS:

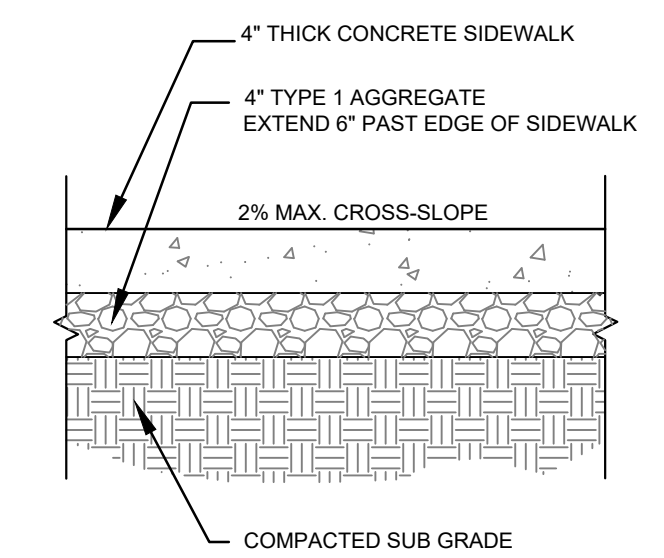
MAINTAIN ACCESS TO EXISTING BUILDING THROUGHOUT THE DURATION OF CONSTRUCTION

GENERAL NOTES:

1. SITE CONDITIONS BASED UPON SURVEY SUBMITTED BY OWNER. THE CONTRACTOR SHALL FIELD VERIFY ALL HORIZONTAL AND VERTICAL LINES AND GRADES OF EXISTING UTILITIES PRIOR TO THE CONSTRUCTION OF IMPROVEMENTS. THE CONTRACTOR SHALL NOTIFY THE ENGINEER IMMEDIATELY UPON DISCOVERING A DISCREPANCY BETWEEN THE CONTRACT DRAWINGS AND ACTUAL FIELD CONDITIONS. CONTACT ONE CALL 1-800-344-7483.
2. THE CONTRACTOR MUST COORDINATE CONSTRUCTION WITH THE NECESSARY AUTHORITIES.
3. APPLICABLE PERMITS MUST BE OBTAINED PRIOR TO EXCAVATION WITHIN ANY RIGHT-OF-WAY, AND PRIOR TO ANY CONSTRUCTION.
4. PROVIDE POSITIVE DRAINAGE AWAY FROM ALL BUILDINGS WITHOUT PONDING ON PARKING LOTS OR SIDEWALKS.
5. ALL IMPROVED RUNOFF TO DRAIN TO DRAINWAYS.
6. THE REMOVAL OF ANY TREES SHALL BE APPROVED BY THE PROJECT MANAGER PRIOR TO REMOVAL.
7. COORDINATE WORK WITH OTHER SITE RELATED DEVELOPMENT DRAWINGS.
8. TESTING OF CONTROLLED STRUCTURAL FILL, OBSERVATION OF EXCAVATIONS AND COMPACTION OF SUBGRADE SHALL BE DONE BY A QUALIFIED GEOTECHNICAL ENGINEER. FOLLOW GEOTECHNICAL ENGINEER RECOMMENDATIONS FOR SITE EXCAVATION REQUIREMENTS.
9. REFER TO STRUCTURAL DRAWINGS FOR BUILDING EXCAVATION REQUIREMENTS.
10. REFER TO STRUCTURAL DRAWINGS FOR BUILDING EXCAVATION REQUIREMENTS.
11. GRADING AT HANDICAP ACCESSIBLE PARKING SPACES SHALL NOT EXCEED 2% IN ANY DIRECTION. GRADING AT HANDICAP ACCESSIBLE ROUTE SHALL NOT EXCEED 5% IN DIRECTION OF TRAVEL WITH 2% MAXIMUM CROSS SLOPE. GRADING AT BUILDING EGRESS DOORS SHALL NOT EXCEED 2% FOR A DISTANCE OF 5'-0" PERPENDICULAR FROM FACE OF DOOR.
12. REFER TO PROJECT MANUAL FOR ADDITIONAL REQUIREMENTS.

GENERAL NOTES:

- A REFER TO PROJECT MANUAL FOR ADDITIONAL REQUIREMENTS.
- B EXISTING SITE CONDITIONS BASED UPON SURVEY SUBMITTED BY OWNER. FIELD VERIFY EXISTING CONDITIONS BY DETAILED SITE INSPECTION PRIOR TO SUBMITTING BID AND BEGINNING CONSTRUCTION.
- C COORDINATE WORK WITH OTHER SITE RELATED DEVELOPMENT DRAWINGS.
- D GRADING AT ACCESSIBLE PARKING SPACES SHALL NOT EXCEED 2% IN ANY DIRECTION. GRADING AT ACCESSIBLE ROUTE SHALL NOT EXCEED 5% IN DIRECTION OF TRAVEL WITH 2% MAXIMUM CROSS SLOPE. GRADING AT BUILDING EGRESS DOORS SHALL NOT EXCEED 2% FOR A DISTANCE OF 5'-0" PERPENDICULAR FROM FACE OF DOOR.



NOTE:
1. ALL SIDEWALKS ARE TO BE BUILT PER CITY OF MARSHFIELD STANDARDS.
2. CONTROL JOINTS AT 5'-0" O.C.

1 TYPICAL SIDEWALK CROSS-SECTION
C1.2 SCALE: NTS

CAUTION:

EXISTING SURFACE FEATURES, STRUCTURES, ETC. AND UNDERGROUND INSTALLATIONS SUCH AS WATER MAINS, GAS MAINS, SEWERS, TELEPHONE LINES, FIBER OPTIC LINES AND BURIED STRUCTURES ARE INDICATED ON THE DRAWING ONLY TO THE EXTENT SUCH INFORMATION HAS BEEN MADE AVAILABLE TO OR DISCOVERED BY THE SURVEYOR IN PREPARING THIS DRAWING. THERE IS NO GUARANTEE AS TO THE ACCURACY OR COMPLETENESS OF SUCH INFORMATION. THE CONTRACTOR IS RESPONSIBLE FOR MAKING HIS OWN DETERMINATION AS TO THE TYPE AND LOCATION OF UNDERGROUND AND OTHER UTILITIES AS MAY BE NECESSARY TO AVOID DAMAGE THERETO.

CAUTION:

CONTRACTOR SHALL FIELD VERIFY PROPOSED GRADES MATCH EXISTING ELEVATIONS AT INDICATED LOCATIONS. CONTRACTOR SHALL NOTIFY ENGINEER IF DISCREPANCY OCCURS. THE DEPTH OF ALL EXISTING UTILITIES AS SHOWN IS APPROXIMATE. CONTRACTOR SHALL FIELD VERIFY ACTUAL DEPTHS AT ALL CROSSINGS PRIOR TO CONSTRUCTION AND NOTIFY ENGINEER IF CONFLICT OCCURS.

UTILITY RELOCATIONS:

KNOWN CONFLICTING UTILITY MAINS SHALL BE RELOCATED BY OTHERS. SERVICE LINES IN CONFLICT SHALL BE RELOCATED DURING CONSTRUCTION. CONTRACTOR SHALL EXCAVATE AND EXPOSE EXISTING SERVICE LINES IN CONFLICT. UTILITY PROVIDERS SHALL RELOCATE SERVICE LINES AND INSTALL NEW CONNECTIONS. CONTRACTOR SHALL BACKFILL AND REPLACE PAVEMENT AFTER NEW SERVICE CONNECTIONS ARE COMPLETED.

SPECIAL NOTE:

ACCESS TO LIFT STATION MUST BE MAINTAINED. CONTRACTOR TO BUILD FIRE STATION/LIFT STATION ACCESS PRIOR TO DEMOLISHING EXISTING LIFT STATION DRIVEWAY.

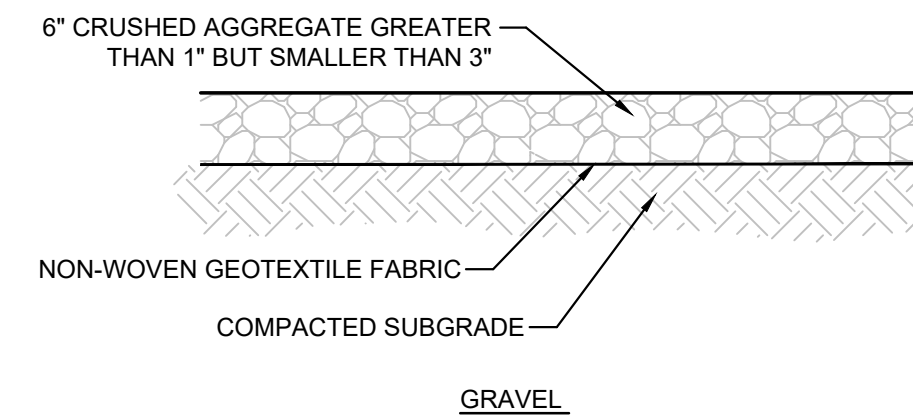


SPECIAL NOTE:

CONTRACTOR TO PERFORM DETAILED SITE INSPECTION TO LOCATE ALL EXISTING UTILITIES AND TO VERIFY ANY POSSIBLE CONFLICTS WITH PROPOSED IMPROVEMENTS PRIOR TO BEGINNING ANY CONSTRUCTION. CONTACT ENGINEER WITH ANY CONFLICTS.

SPECIAL NOTE:

CONTRACTOR SHALL REPAIR AND/OR REPLACE ANY DAMAGED AREAS OF PAVEMENT DUE TO CONSTRUCTION ACTIVITIES.

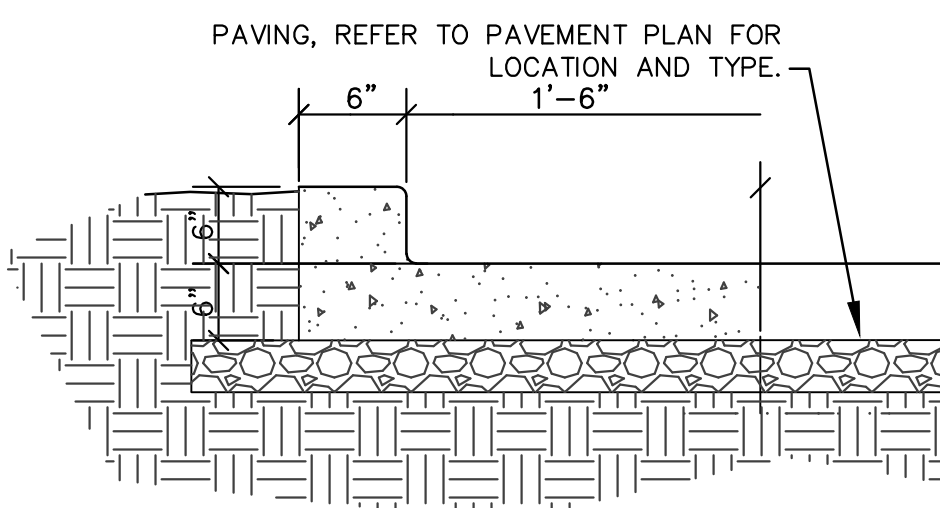


GENERAL NOTES:

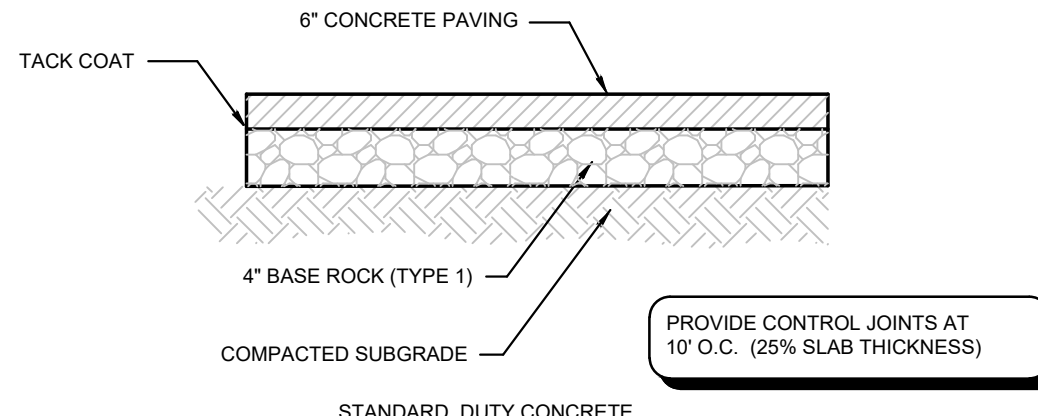
1. SUBGRADE MUST BE STABLE AND HARD UNDER PROOF ROLLING WITH A FULLY LOADED TANDEM AXLE DUMP TRUCK PRIOR TO INSTALLING BASE ROCK.
2. SOILS MUST BE PLACED AND COMPACTED TO A MINIMUM OF 95% MAXIMUM DRY DENSITY AS DETERMINED BY ASTM D698 WITH MAXIMUM LOOSE LIFT OF 8".
3. THE MAXIMUM COMPACTED THICKNESS OF ANY ONE LAYER OF ROCK MATERIAL SHALL NOT EXCEED 6 INCHES WITH EACH LIFT COMPACTED TO 100% OF MAXIMUM DRY DENSITY AS DETERMINED BY ASTM D698 (STANDARD PROCTOR).
4. CONTRACTOR TO MAINTAIN THICKNESS.

6 GRAVEL PARKING LOT SECTION
C1.2 SCALE: NOT TO SCALE

PROVIDE CONTROL JOINTS AT 10' O.C. (25% SLAB THICKNESS)



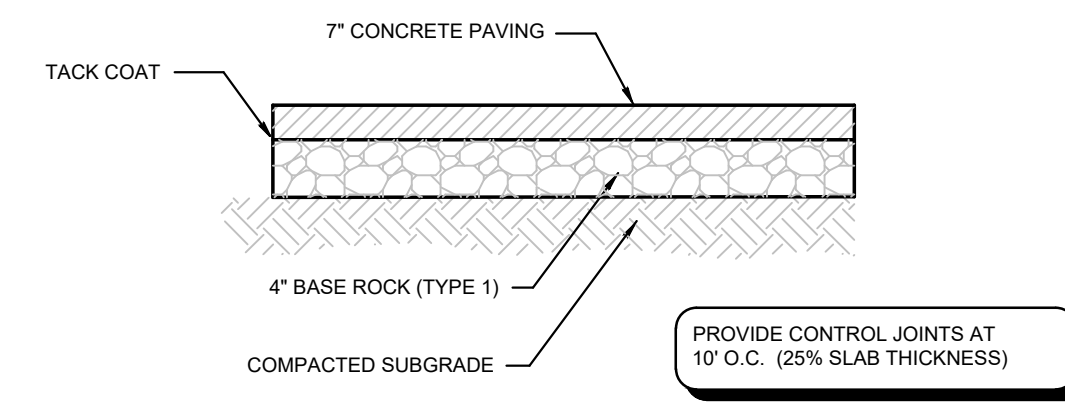
4 CURB AND GUTTER
C1.2 SCALE: NOT TO SCALE



NOTES:

1. SUBGRADE MUST BE STABLE AND HARD UNDER PROOF ROLLING WITH A FULLY LOADED TANDEM AXLE DUMP TRUCK PRIOR TO INSTALLING BASE ROCK.
2. SOILS MUST BE PLACED AND COMPACTED TO A MINIMUM OF 95% MAXIMUM DRY DENSITY AS DETERMINED BY ASTM D698 WITH MAXIMUM LOOSE LIFT OF 8".
3. THE MAXIMUM COMPACTED THICKNESS OF ANY ONE LAYER OF BASE ROCK MATERIAL SHALL NOT EXCEED 6 INCHES WITH EACH LIFT COMPACTED TO 100% OF MAXIMUM DRY DENSITY AS DETERMINED BY ASTM D698 (STANDARD PROCTOR).
4. CONCRETE PAVEMENTS SHOULD MEET THE REQUIREMENTS OF SECTION 502 OF THE MODOT STANDARD SPECIFICATIONS FOR PORTLAND CEMENT CONCRETE PAVEMENTS.
5. CARE MUST BE TAKEN TO DEVELOP POSITIVE DRAINAGE ACROSS AND FROM AROUND THE PAVEMENT EDGES. WATER ALLOWED TO POND ON OR ADJACENT TO PAVEMENTS WOULD INCREASE THE POTENTIAL FOR MOISTURE INTRUSION INTO THE SUBGRADE SOILS AND COULD RESULT IN PREMATURE PAVEMENT FAILURE.
6. A MAINTENANCE PROGRAM THAT INCLUDES SURFACE SEALING, JOINT CLEANING AND SEALING AND TIMELY REPAIR OF CRACKS AND DETERIORATED AREAS WILL HELP PRESERVE THE PAVEMENT LIFE.
7. 28 DAY COMPRESSIVE STRENGTH TO BE 4000 PSI.
8. THE BASE ROCK SHOULD MEET SECTION 1007 FOR TYPE V AGGREGATE OF THE MODOT STANDARD SPECIFICATIONS.

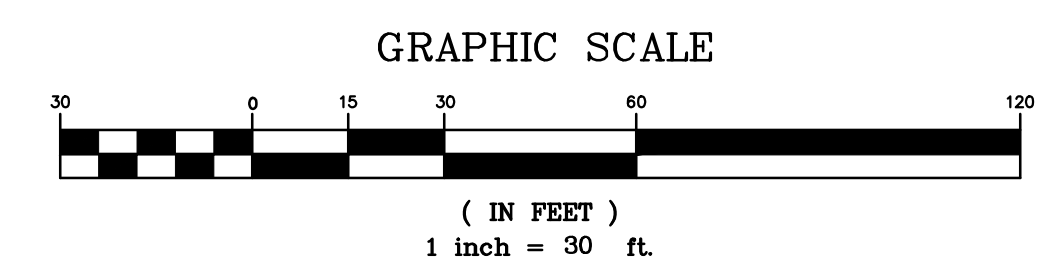
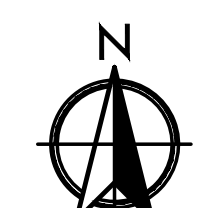
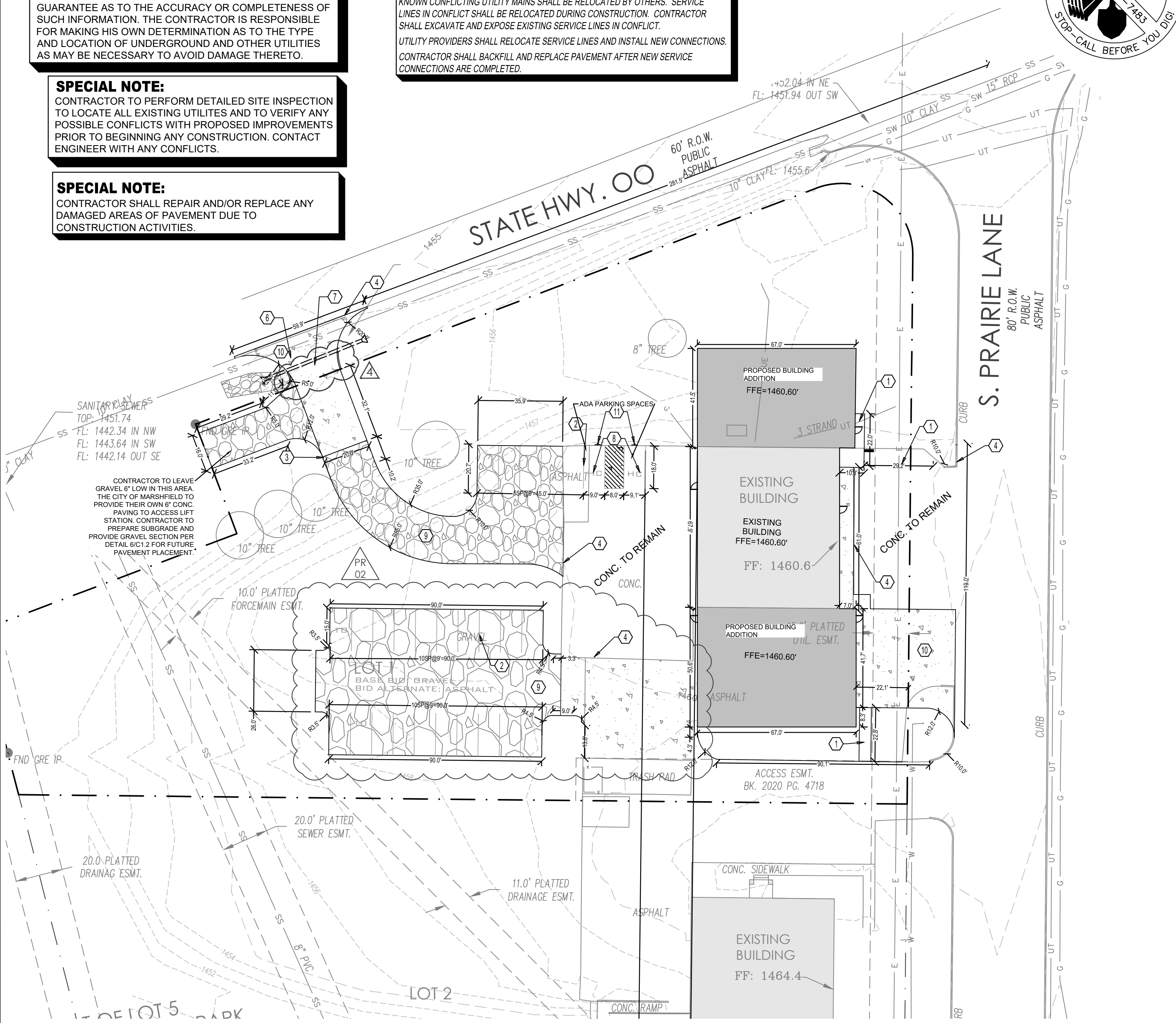
2 STANDARD DUTY CONCRETE PAVEMENT
C1.2 SCALE: NTS



NOTES:

1. SUBGRADE MUST BE STABLE AND HARD UNDER PROOF ROLLING WITH A FULLY LOADED TANDEM AXLE DUMP TRUCK PRIOR TO INSTALLING BASE ROCK.
2. SOILS MUST BE PLACED AND COMPACTED TO A MINIMUM OF 95% MAXIMUM DRY DENSITY AS DETERMINED BY ASTM D698 WITH MAXIMUM LOOSE LIFT OF 8".
3. THE MAXIMUM COMPACTED THICKNESS OF ANY ONE LAYER OF BASE ROCK MATERIAL SHALL NOT EXCEED 6 INCHES WITH EACH LIFT COMPACTED TO 100% OF MAXIMUM DRY DENSITY AS DETERMINED BY ASTM D698 (STANDARD PROCTOR).
4. CONCRETE PAVEMENTS SHOULD MEET THE REQUIREMENTS OF SECTION 502 OF THE MODOT STANDARD SPECIFICATIONS FOR PORTLAND CEMENT CONCRETE PAVEMENTS.
5. CARE MUST BE TAKEN TO DEVELOP POSITIVE DRAINAGE ACROSS AND FROM AROUND THE PAVEMENT EDGES. WATER ALLOWED TO POND ON OR ADJACENT TO PAVEMENTS WOULD INCREASE THE POTENTIAL FOR MOISTURE INTRUSION INTO THE SUBGRADE SOILS AND COULD RESULT IN PREMATURE PAVEMENT FAILURE.
6. A MAINTENANCE PROGRAM THAT INCLUDES SURFACE SEALING, JOINT CLEANING AND SEALING AND TIMELY REPAIR OF CRACKS AND DETERIORATED AREAS WILL HELP PRESERVE THE PAVEMENT LIFE.
7. 28 DAY COMPRESSIVE STRENGTH TO BE 4000 PSI.
8. THE BASE ROCK SHOULD MEET SECTION 1007 FOR TYPE V AGGREGATE OF THE MODOT STANDARD SPECIFICATIONS.

3 HEAVY DUTY CONCRETE PAVEMENT
C1.2 SCALE: NTS



5 NOT USED
C1.2 SCALE: NTS

SYMBOLS LEGEND

REFER TO SURVEY FOR EXISTING CONDITION SYMBOLS LEGEND AND SITE CONTROL.	
	NEW BUILDING CONSTRUCTION
	STANDARD DUTY CONCRETE
	STANDARD DUTY ASPHALT
	GRAVEL



3100 S. NATIONAL AVENUE, SUITE 300
SPRINGFIELD, MO 65807
PHONE: 417.890.5543 FAX: 417.890.5563
MISSOURI CERTIFICATE OF AUTHORITY NO. A-2006007284

PROJECT:
FIRE STATION NO. 03
ADDITION & RENOVATION FOR:



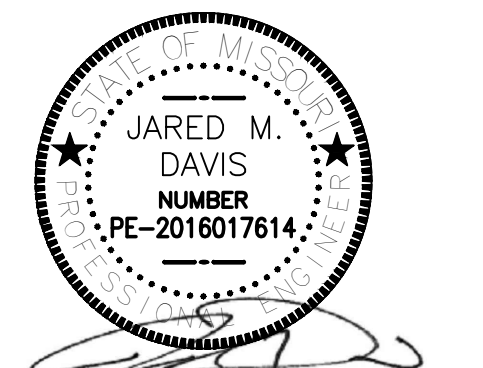
LOCATION:
321 S. PRAIRIE LANE
MARSHFIELD, WEBSTER COUNTY, MISSOURI 65706

CONSULTANTS:
MECHANICAL/ELECTRICAL/PLUMBING ENGINEER:
BUXTON KUBIK DODD
DESIGN COLLECTIVE
3100 S. NATIONAL AVE. SUITE 300
SPRINGFIELD, MO 65804

STRUCTURAL ENGINEER:
J&M ENGINEERING
3045 S. KANSAS EXPRESSWAY
SPRINGFIELD, MO 65807
CIVIL ENGINEER:
ANDERSON ENGINEERING
3213 S. WEST BYPASS
SPRINGFIELD, MISSOURI 65807

MODIFICATIONS:
AD #1 - 2022-02-26
AD #3 - 2022-06-08
SI 01 - 2022-06-16
PR 01 - 2022-06-16
SI 02 - 2022-06-30
PR 02 - 2022-09-16

CONSTRUCTION DOCUMENTS



9/16/2022

Project No. 8K0-2592 Drawn ES Date 11.04.2021 CAD File No.

C1.2